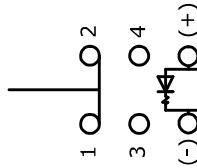


PANEL CUTOUT
MAX. PANEL THICKNESS 8mm

SWITCH FUNCTION	
POS. 1	POS. 2
1-2 ON	1-2 (OFF)
3-4 OFF	3-4 (ON)

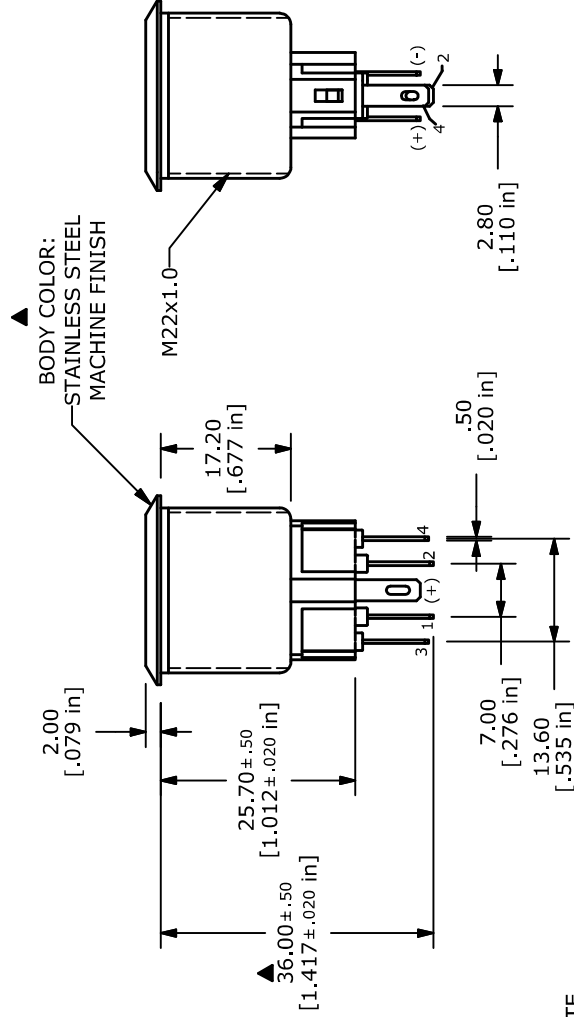
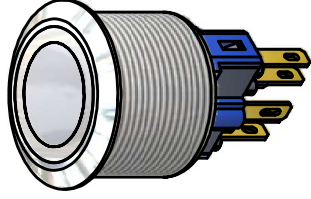
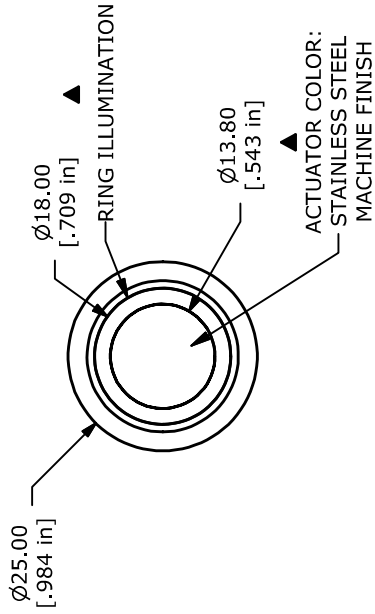
() = MOMENTARY



SPDT

NOTE:

- ALL DIMENSIONS IN MM [INCH]
- GENERAL TOLERANCE: X.X = ± 0.4
X.XX = ± 0.25
- TERMINAL NOS. FOR REF. ONLY
- FUNCTION: SPDT
- RATING: 2A @ 48VDC
- ILLUMINATION VOLTAGE: 3.0V 20mA
- CONTACT RESISTANCE: 50mΩ MAX. @ 1A 12VDC
- INSULATION RESISTANCE: 1,000MΩ @ 500VDC
- DIELECTRIC STRENGTH: 2,000VAC MIN. FOR 1 MINUTE
- ELECTRICAL LIFE: 50,000 CYCLES
- OPERATING TEMPERATURE: -40°C TO 70°C
- INGRESS PROTECTION: IP65
- ▲ DENOTES CRITICAL PARAMETER
- 2002/95/EC (ROHS) COMPLIANT
- ILLUMINATION COLOR: WHITE (FORWARD), WHITE (REVERSE)
- HARDWARE INCLUDED (NOT SHOWN) HEX NUT AND O-RING



BODY COLOR:
STAINLESS STEEL
MACHINE FINISH

M22x1.0



TITLE PV7F2Y0SS-301

A	20091	RELEASE FOR PRODUCTION	8/12/11	BGL
REV	PCR NO	DESCRIPTION	DATE	BY

THE INFORMATION CONTAINED IN THIS DOCUMENT IS PROPRIETARY TO E-SWITCH AND IS NOT TO BE COPIED OR TRANSFERRED

SCALE 1:1 DATE 2/7/2012 DR BMA DWG 52-PV7F2Y0SS301 REV A