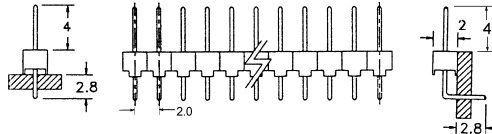
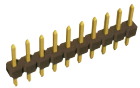




Pin header single row
YTM1Nxx

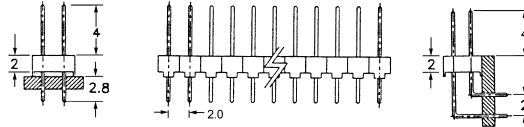
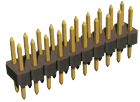


2.0mm pitch (02 to 40 pins)

Pin header single row (right angle)
YTM1Rxx

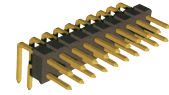


Pin header dual rows
YTP2Nxx

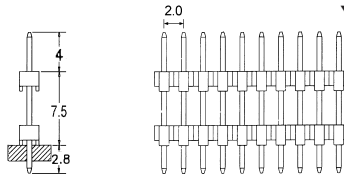
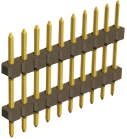


2.0mm pitch (02 to 40 pins)

Pin header dual rows (right angle)
YTP2Rxx

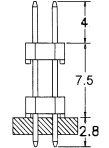


Pin stack header single row
YTQ1Nxx

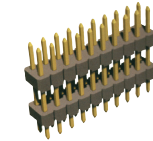


2.0mm pitch (02 to 40 pins)

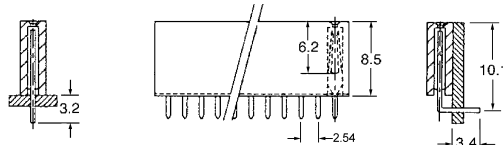
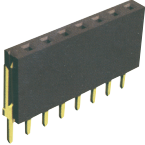
Pin stack header dual rows
YTQ2Nxx



2.0mm pitch (04 to 80 pins)



Female header single row
YTS1Nxx

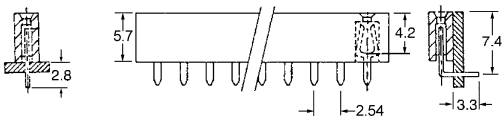
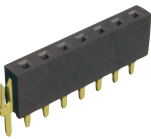


2.54mm pitch (02 to 40 pins)

Female header single row (right angle)
YTS1Rxx

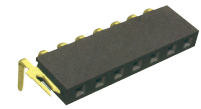


Female header single row
YTS1NSxx

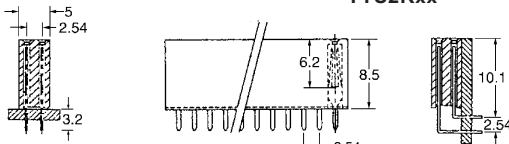
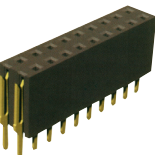


2.54mm pitch (02 to 40 pins)

Female header single row (right angle)
YTS1RSxx



Female header dual rows
YTS2Nxx

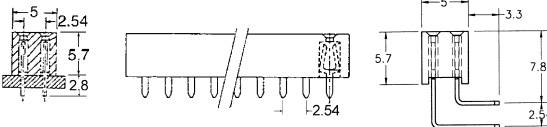
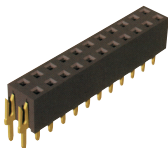


2.54mm pitch (04 to 80 pins)

Female header dual rows (right angle)
YTS2Rxx



Female header dual rows
YTS2NSxx

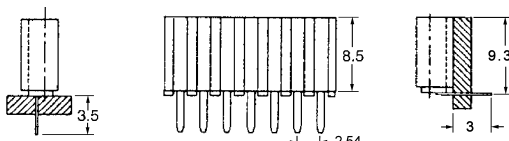


2.54mm pitch (04 to 80 pins)

Female header dual rows (right angle)
YTS2RSxx

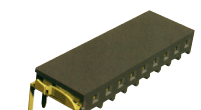


Folded female header single row
YTT1Nxx

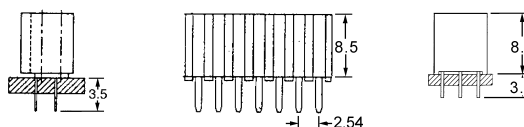
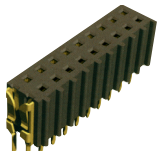


2.54mm pitch (02 to 40 pins)

Folded female header single row (right angle)
YTT1Rxx

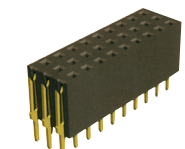


Folded female header dual rows
YTT2Nxx



2.54mm pitch (04 to 80 pins)

Female header triple rows
YTT3Nxx



2.54mm pitch (09 to 96 pins)