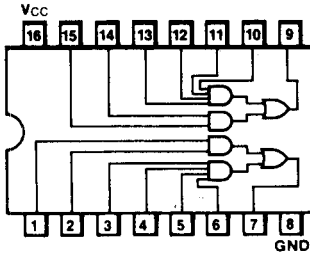
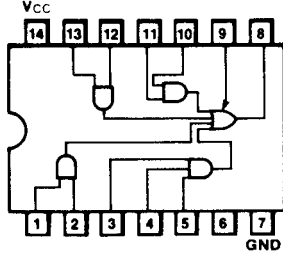


DIGITAL - TTL

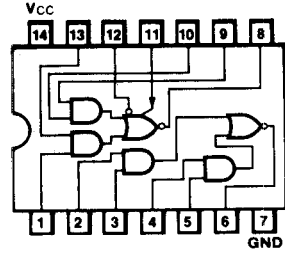
**D25**  
9S42



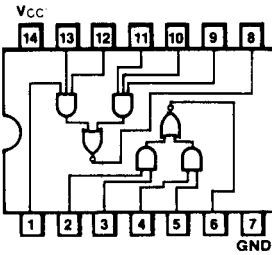
**D26**  
54H/74H52



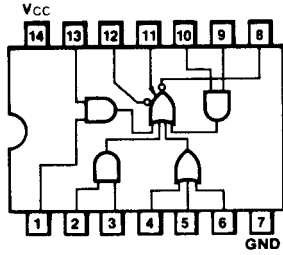
**D27**  
9005, 54/7450, 54H/74H50



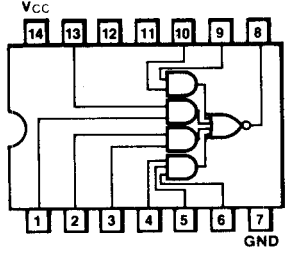
**D28**  
54/7451\*, 54H/74H51\*,  
54S/74S51\*, 54LS/74LS51



**D29**  
9008, 54/7453, 54H/74H53



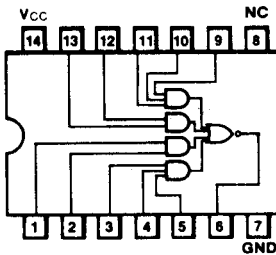
**D30**  
54/7454, 54H/74H54



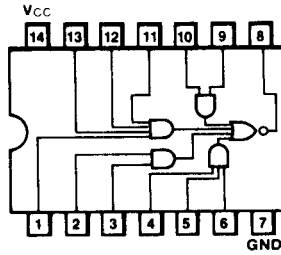
\*Make no external connection  
to pins 11 & 12

**9008, 54/7453, 54H/74H53**

**D31**  
54LS/75LS54



**D32**  
74S64, 74S65



# FAIRCHILD DIGITAL

## TTL

### SSI FUNCTIONS (Cont'd)

Item	Function <sup>(1)</sup>	9000 Series 8 ns/10 mW	Low Power Schottky 54LS/74LS 5 ns/2 mW	Std. TTL 9N 54/74 10 ns/10 mW	High Speed 54H/74H 6 ns/22 mW	High Speed Schottky 54S/74S 3 ns/19 mW	Logic/Connection Diagram <sup>(2)</sup>	Packages <sup>(3)</sup>
<b>Exclusive NOR Gate</b>								
1	Quad 2-Input (OC)	—	74LS266	9386 (8242)	—	—	D94	31,6A,9A
<b>AND-OR Gates</b>								
2	Dual 4-2 Input	—	—	—	—	9S42	D25	4L,6B,9B
3	2-2-2-3 Input (Exp)	—	—	—	54H/74H52	—	D26	31,6A,9A
<b>AND-OR-INVERT Gates</b>								
4	Dual 2-2 Input (Exp)	9005	—	54/7450	54H/74H50	—	D27	31,6A,9A
5	Dual 2-2 Input	—	54LS/74LS51	54/7451	54H/74H51	54S/74S51	D28	31,6A,9A
6	2-2-2-3 Input (Exp)	9008	—	54/7453	54H/74H53	—	D29	31,6A,9A
7	2-2-2-3 Input	—	—	54/7454	54H/74H54	—	D30	31,6A,9A
8	2-2-3-3 Input	—	54LS/74LS54	—	—	—	D31	31,6A,9A
9	2-2-3-4 Input	—	—	—	—	74S64	D32	6A,9A
10	2-2-3-4 Input (OC)	—	—	—	—	74S65	D32	6A,9A
11	4-4 Input (Exp)	—	—	—	54H/74H55	—	D33	31,6A,9A
12	4-4 Input	—	54LS/74LS55	—	—	—	D34	31,6A,9A
<b>Gate Expanders</b>								
13	Triple 3-Input	—	—	—	54H/74H61	—	D35	31,6A,9A
14	Dual 4-Input	9006	—	54/7460	54H/74H60	—	D36	31,6A,9A
15	2-2-3-3 AND-OR	—	—	—	54H/74H62	—	D37	31,6A,9A
<b>Buffer Gates and Drivers</b>								
16	Quad Buffer (3S)	—	54LS/74LS125	54/74125	—	—	D66	31,6A,9A
17	Quad Buffer (3S)	—	54LS/74LS126	54/74126	—	—	D67	31,6A,9A
18	Hex (3S)	—	54LS/74LS365	—	—	—	D68	4L,6B,9B
19	Hex Inverter (3S)	—	54LS/74LS366	—	—	—	D69	4L,6B,9B
20	Hex (3S)	—	54LS/74LS367	—	—	—	D70	4L,6B,9B
21	Hex Inverter (3S)	—	54LS/74LS368	—	—	—	D71	4L,6B,9B

1. OC = open collector, 3S = 3-state.

2. The logic symbols located in the Logic/Connection Diagram Section are for the DIP version.

3. For specific availability or delivery information on a given package and temperature grade, consult the Fairchild O.E.M. Price List or call the local sales representative or distributor.