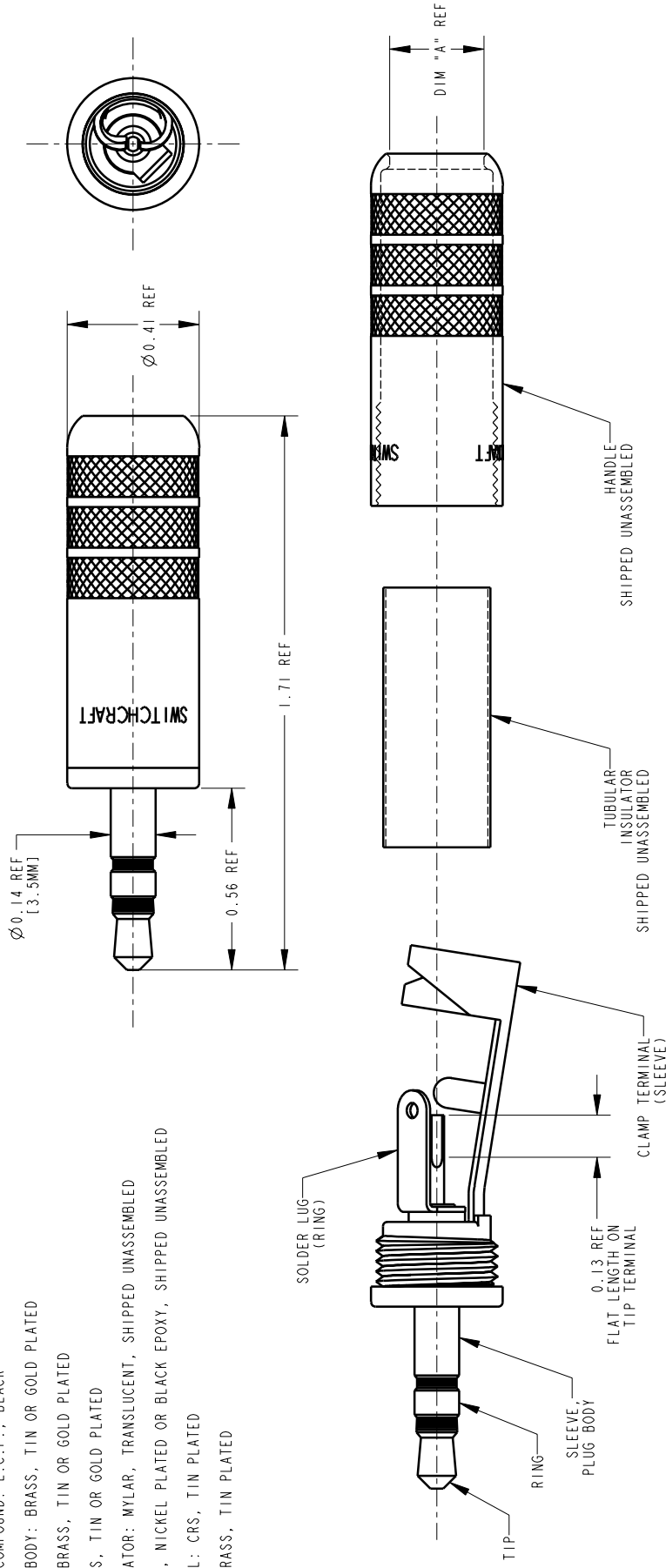


MATERIALS:

- PLUG MOLDING COMPOUND: L.C.P., BLACK
- SLEEVE, PLUG BODY: BRASS, TIN OR GOLD PLATED
- RING SLEEVE: BRASS, TIN OR GOLD PLATED
- TIP ROD: BRASS, TIN OR GOLD PLATED
- TUBULAR INSULATOR: MYLAR, TRANSLUCENT, SHIPPED UNASSEMBLED
- HANDLE: BRASS, NICKEL PLATED OR BLACK EPOXY, SHIPPED UNASSEMBLED
- CLAMP TERMINAL: CRS, TIN PLATED
- SOLDER LUG: BRASS, TIN PLATED



(D)

PART NUMBER	PLUG FINGER	HANDLE	DIM "A" CABLE DIA.
35HDNN	TIN	NICKEL	0.290
35HDNS	TIN	NICKEL	0.175
35HDBAU	GOLD	BLACK	0.290
35HDBAUS	GOLD	BLACK	0.175
35HDNAU	GOLD	NICKEL	0.290
35HDNAUS	GOLD	NICKEL	0.175
35HDBN	TIN	BLACK	0.290
35HDBNS	TIN	BLACK	0.175

CUSTOMER DRAWING

STAR SYMBOL DENOTES CRITICAL DIMENSION		SIZE	WIDTH	MULT	TEBS/M	TEMPER
E	24122	3-11-02	TJK	TJK		
D	23193	2-1-00	DA	TJK		
C	22688	2-1-00	DA	TJK		
B	22613	10-7-99	DA	DK		
A	22384	10-7-99	DA	DK		
REV	ECO NUMBER	DATE	BY	APVD		
					DO NOT SCALE DRAWING	
<p>THIS DRAWING DESCRIBES A DESIGN CONSIDERED PROPRIETARY IN NATURE. DEVELOPER AND MANUFACTURER BY SWITCHCRAFT INC. AND IS RELEASED ON A CONFIDENTIAL BASIS FOR IDENTIFICATION PURPOSES ONLY.</p> <p>UNLESS OTHERWISE SPECIFIED</p> <p>1. ALL DIMENSIONS IN INCHES</p> <p>- TWO PLACE DECIMALS ±0.01</p> <p>- THREE PLACE DECIMALS ±0.005</p> <p>- ANGLES ±1°</p> <p>- ALL DIA. CONCENTRIC WITHIN 0.005 T.I.R.</p> <p>2. FEATURES ON THE SAME CENTERLINE MUST BE ALIGNED WITHIN ±0.002</p> <p>3. REMOVE ALL BURRS</p>						
FINISH		FIRST USED ON		SCALE		MATERIAL
SPEC No.		CHKD		3:1		SPEC No.
DATE DRAWN		BY		DK		
07-04-99		DA		DK		
NAME		SHEET		OF		REV
3.5mm STEREO PLUG		1		1		E
PART No.		SHEET		OF		REV
35HD SERIES		1		1		E

Pro/Engineer CAD File