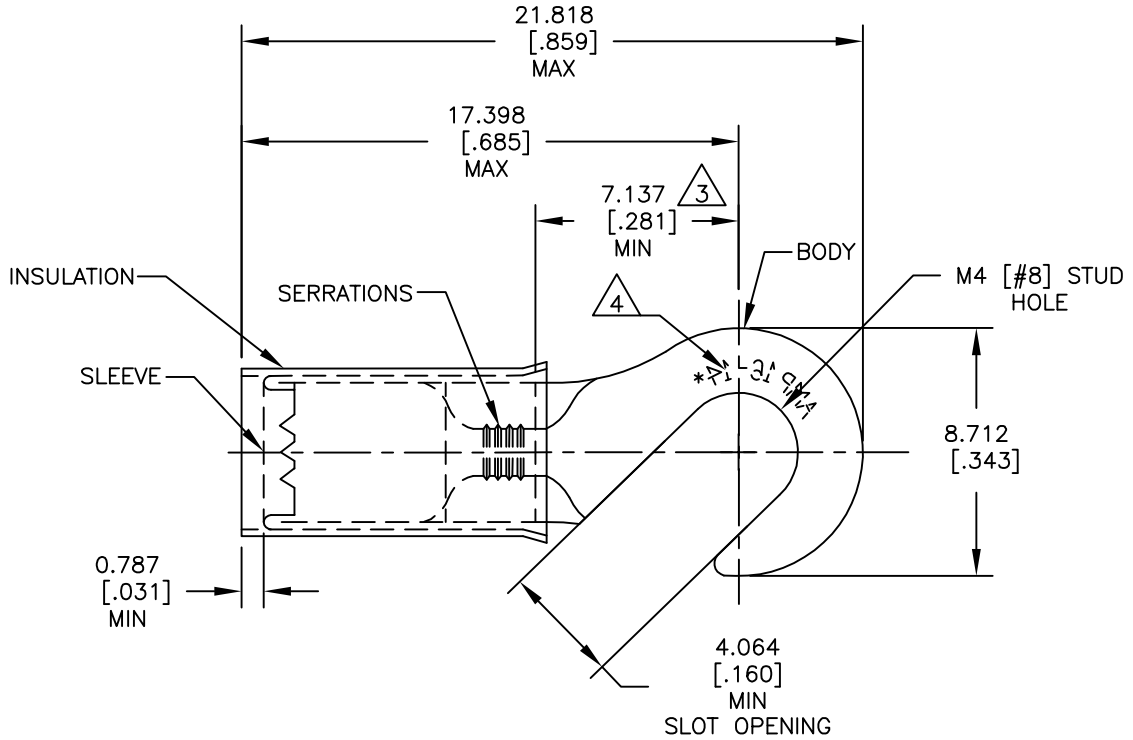


REVISIONS

P	LTR	DESCRIPTION	DATE	DWN	APVD
	F1	REDRAWN PER ECO-17-007400	15DEC2017	RS	DR

AMP WIRE RANGE	Listed FILE E13288	LR7189 Certified
16-14 AWG SOLID OR STRANDED	16-14 AWG SOLID OR STRANDED	16-14 AWG SOLID OR STRANDED



1 FOR $\phi 2.921[\phi .115]$ TO $\phi 4.318[\phi .170]$ WIRE INSULATION.

2 BODY MATERIAL THICKNESS: $0.787 \pm 0.051 [.031 \pm .002]$

APPLIES FROM EDGE OF METAL WIRE BARREL TO CENTER OF STUD HOLE.

STAMP AMP 16-14* APPROX AS SHOWN.

MATERIAL:
BODY & SLEEVE: COPPER PER ASTM B152
INSULATION: NYLON

FINISH:
BODY & SLEEVE: TIN PLATE PER ASTM B545
INSULATION: COLOR-BLUE.

5000	ON TAPE	2-320306-1
1000	LOOSE PIECE	320306
QTY	PACKAGE TYPE	PART NO

RELEASED FOR PUBLICATION

ALL RIGHTS RESERVED.

THIS DRAWING IS UNPUBLISHED.

© COPYRIGHT - TE Connectivity

DIMENSIONS: mm [INCHES]	DWN	RAVI S	15DEC2017	MATERIAL		FINISH	
	CHK	ROHDE DANIEL F	15DEC2017	TE Connectivity NAME WIRE TERMINAL, P.I.D.G - HOOK, WIRE SIZE: 16-14			
TOLERANCES UNLESS OTHERWISE SPECIFIED:	APVD	ROHDE DANIEL F	15DEC2017				
0 PLC ± -	PRODUCT SPEC	UL 486 A-B		SIZE	A4	CAGE CODE	00779
1 PLC ± -	APPLICATION SPEC	114-2157		DRAWING NO	C= 320306		
2 PLC ± -	WEIGHT	-		RESTRICTED TO	-		
3 PLC ± 0.127[.005]	CUSTOMER DRAWING						
4 PLC ± -	SCALE		4:1		SHEET		1 OF 1
ANGLES ± 5°	REV		F1				